



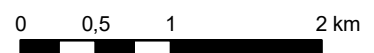
**Palokangas-Selänmäki, 11582051A, 11582051B, luokka 1
Raah**

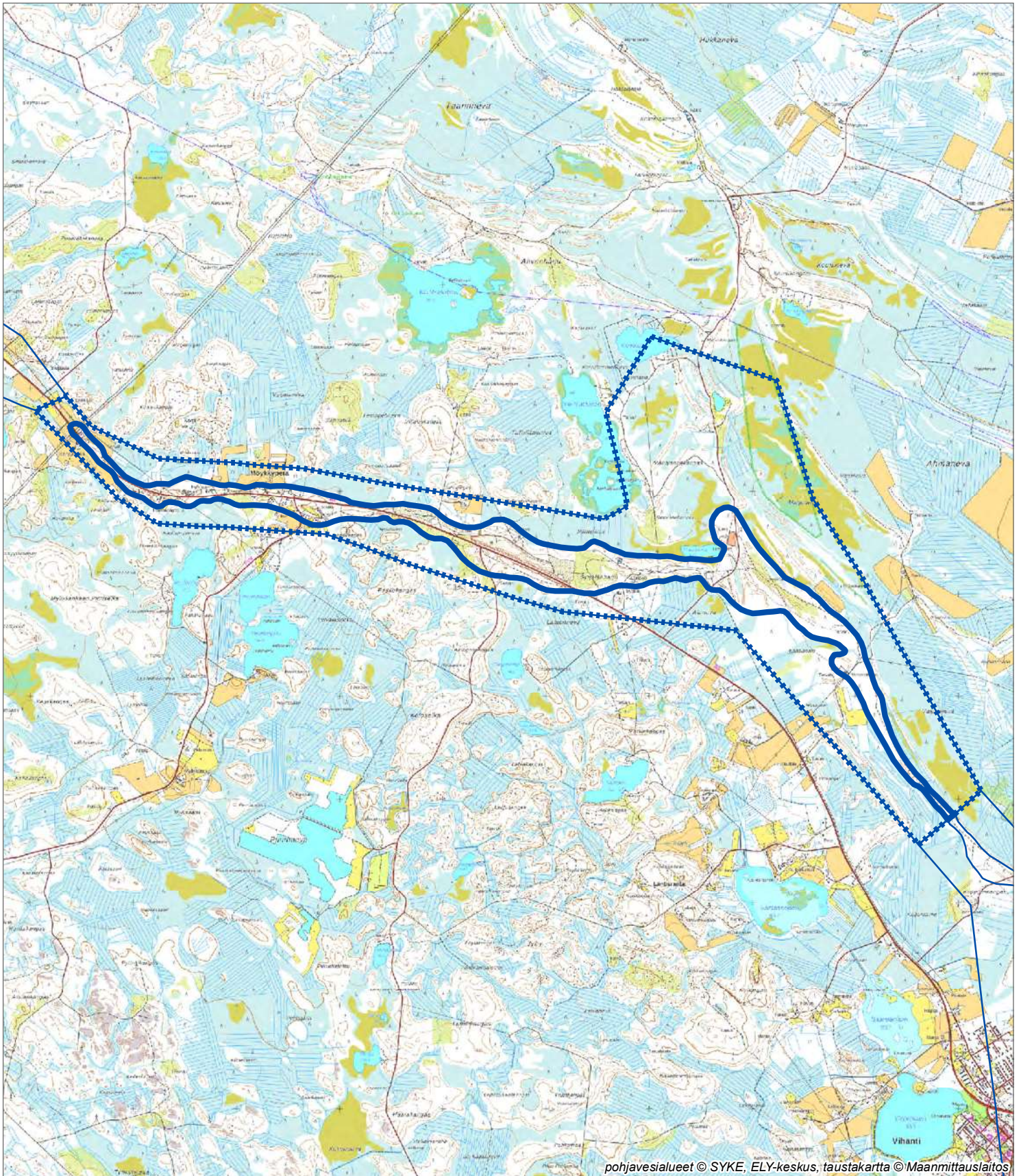


-  Pohjavesialueen raja
-  Varsinaisen muodostumisalueen raja

7.11.2017



1:50 000





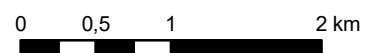
Möykkylä-Mäntylampi, 11926001, luokka 1 Raah

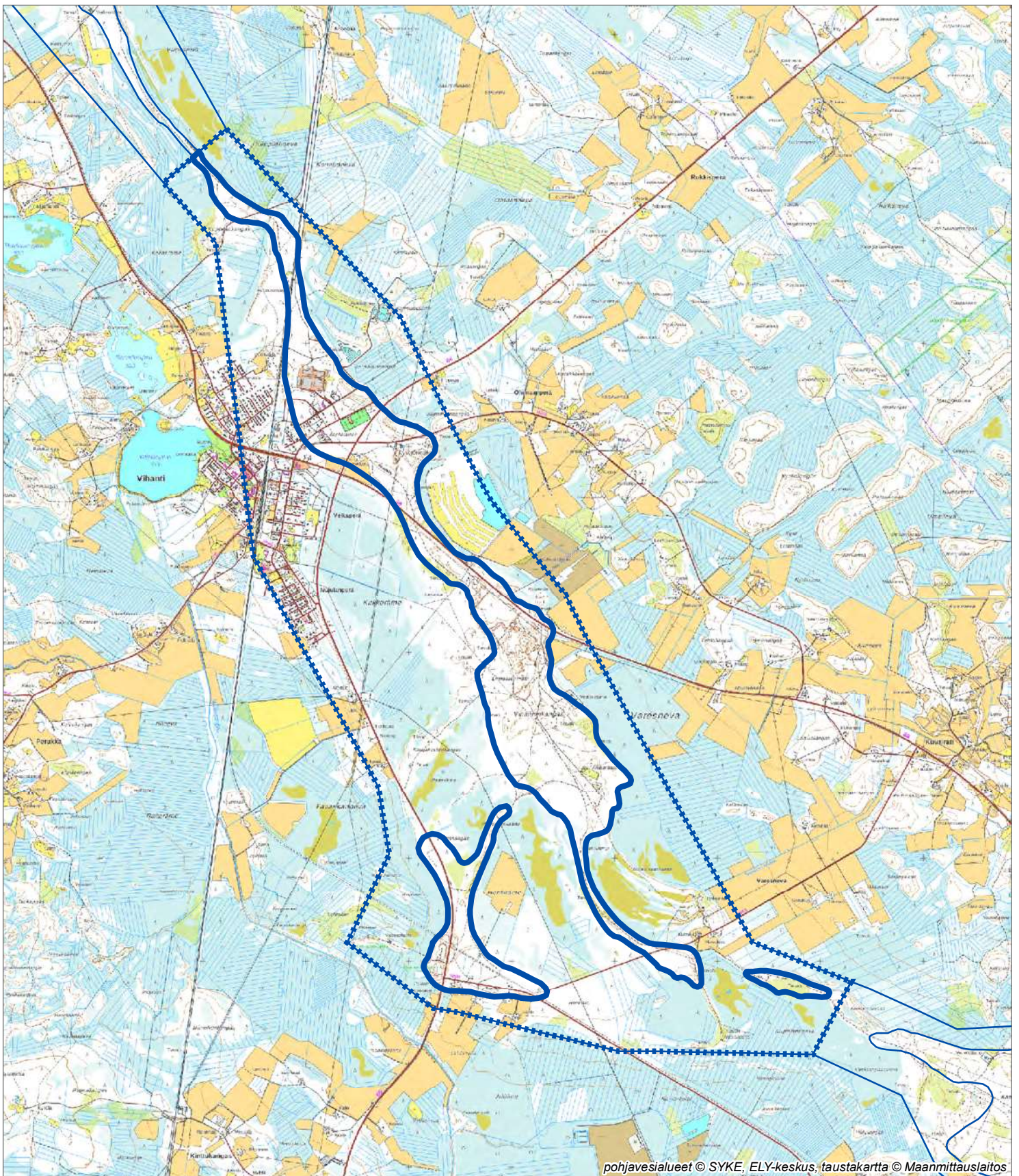


-  Pohjavesialueen raja
-  Varsinaisen muodostumisalueen raja

6.11.2017

1:50 000





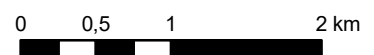
Vihanninkangas, 11926002, luokka 1 Raahe

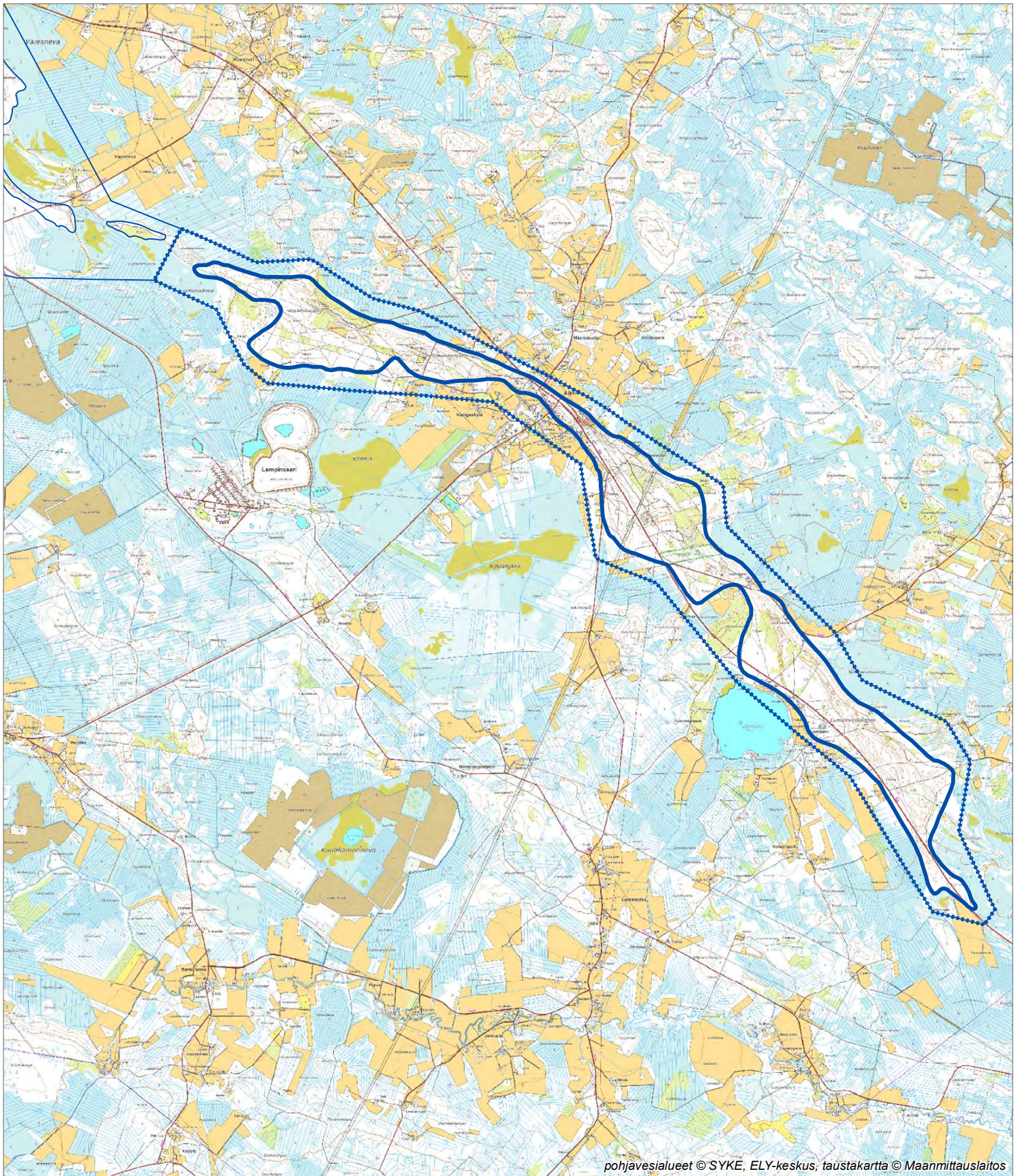
- Pohjavesialueen raja
- Varsinaisen muodostumisalueen raja



6.11.2017

1:50 000







pohjavesialueet © SYKE, ELY-keskus; taustakartta © Maanmittauslaitos

Alpuja-Lumijärvi, 11926003, luokka 1 Raah



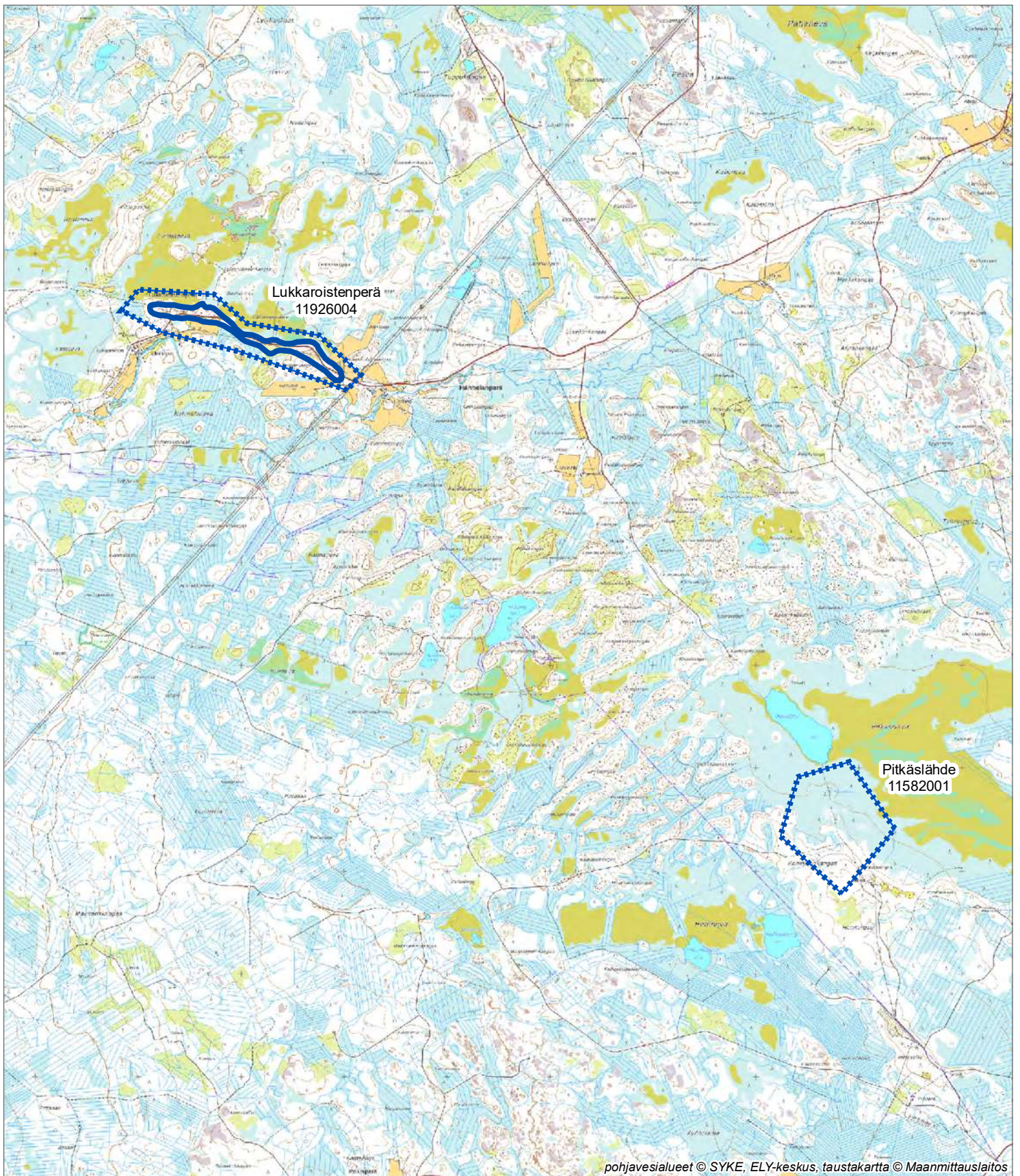
Elinkeino-, liikenne- ja
ympäristökeskus

-  Pohjavesialueen raja
-  Varsinaisen muodostumisalueen raja

6.11.2017



1:50 000





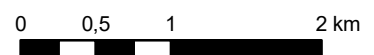
**Lukkarostenperä, 11926004, luokka 1
Pitkäslähde, 11582001, poistetaan luokitukselta
Raahel**

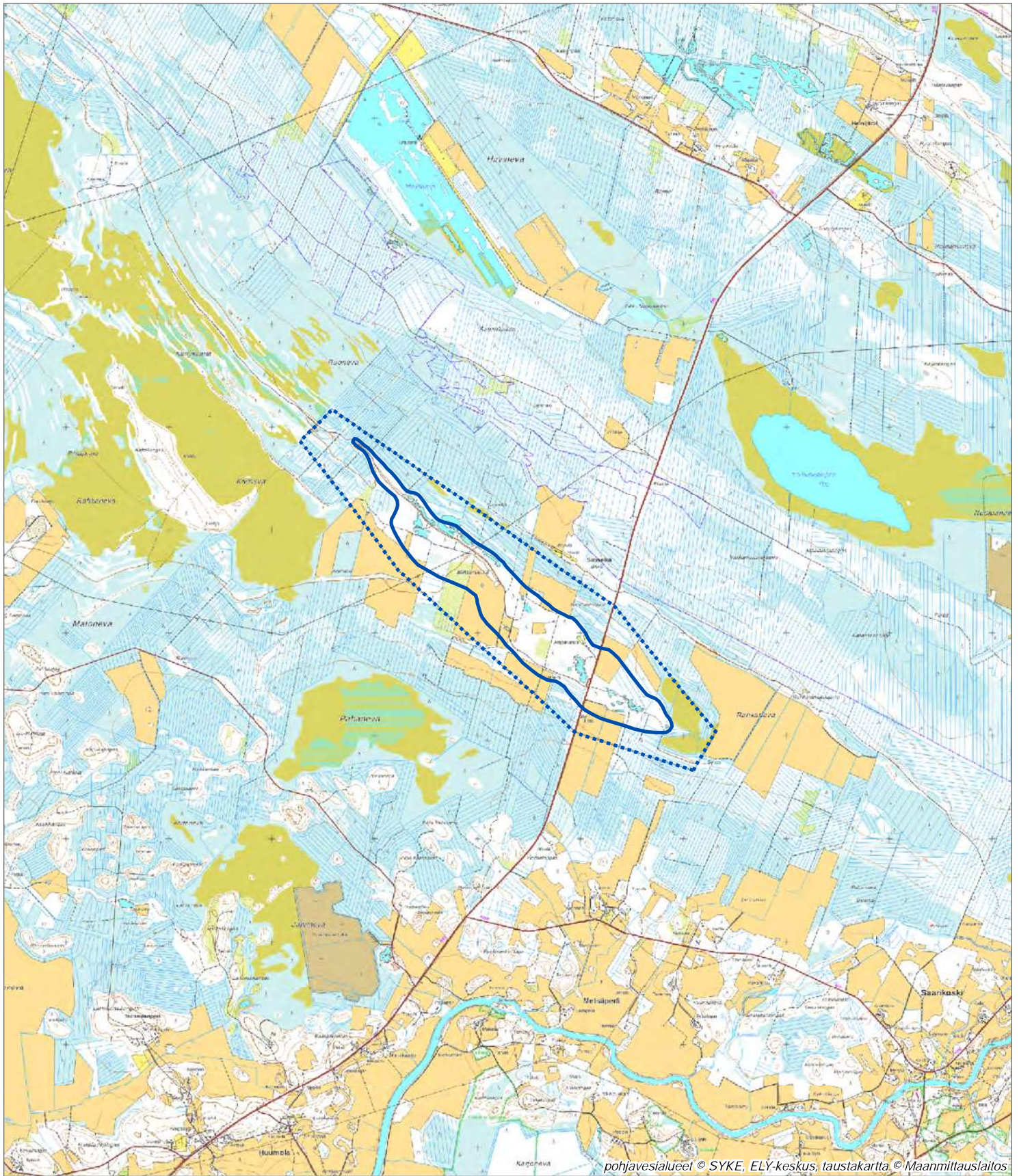


-  Pohjavesialueen raja
-  Varsinaisen muodostumisalueen raja

2.11.2017



1:50 000





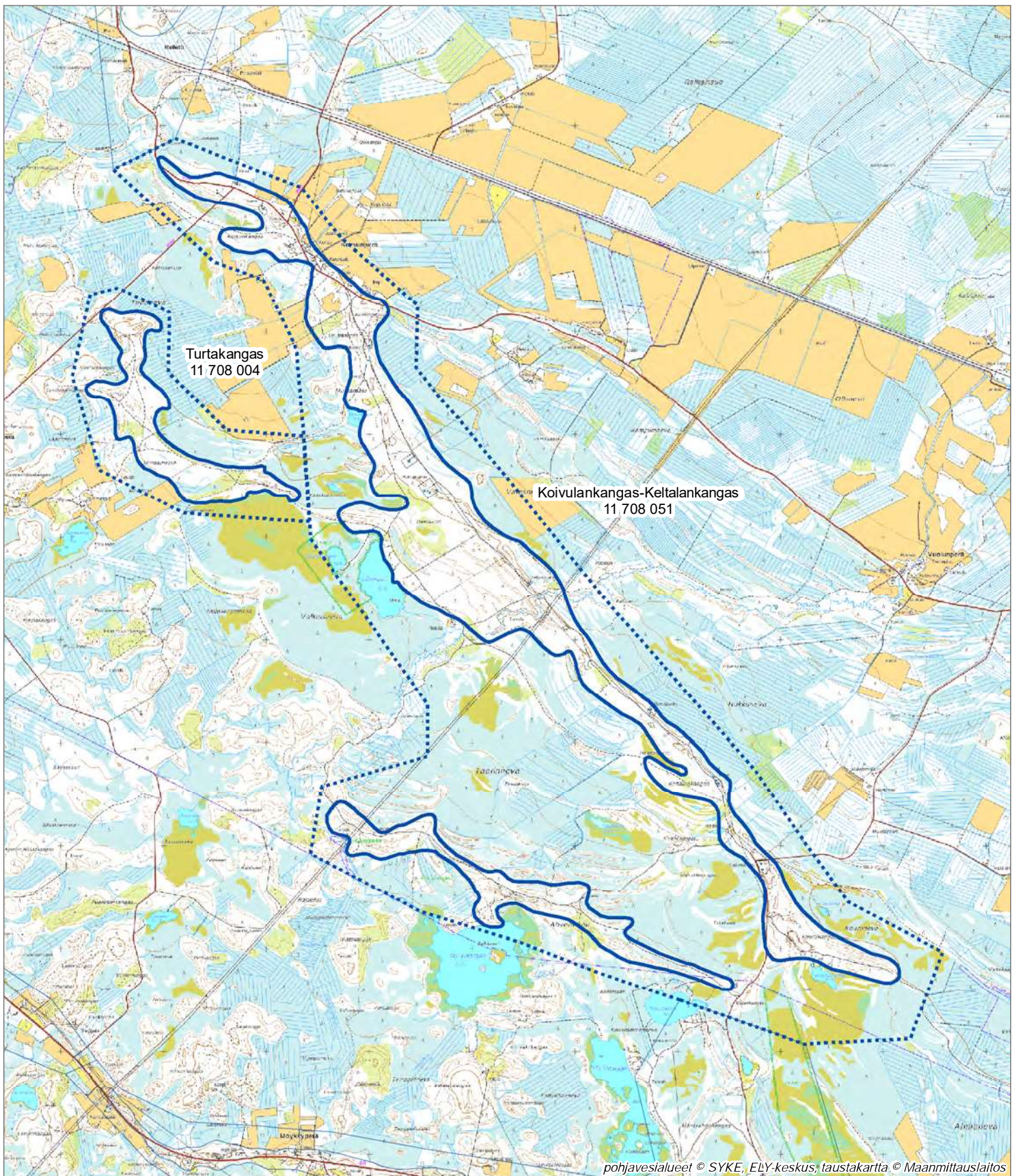
Mikonselkä, 11 708 001, luokka 2
Siikajoki



-  Pohjavesialueen raja
-  Varsinaisen muodostumisalueen raja

2.2.2018 1:50 000







pohjavesialueet © SYKE, ELY-keskus, taustakartta © Maanmittauslaitos

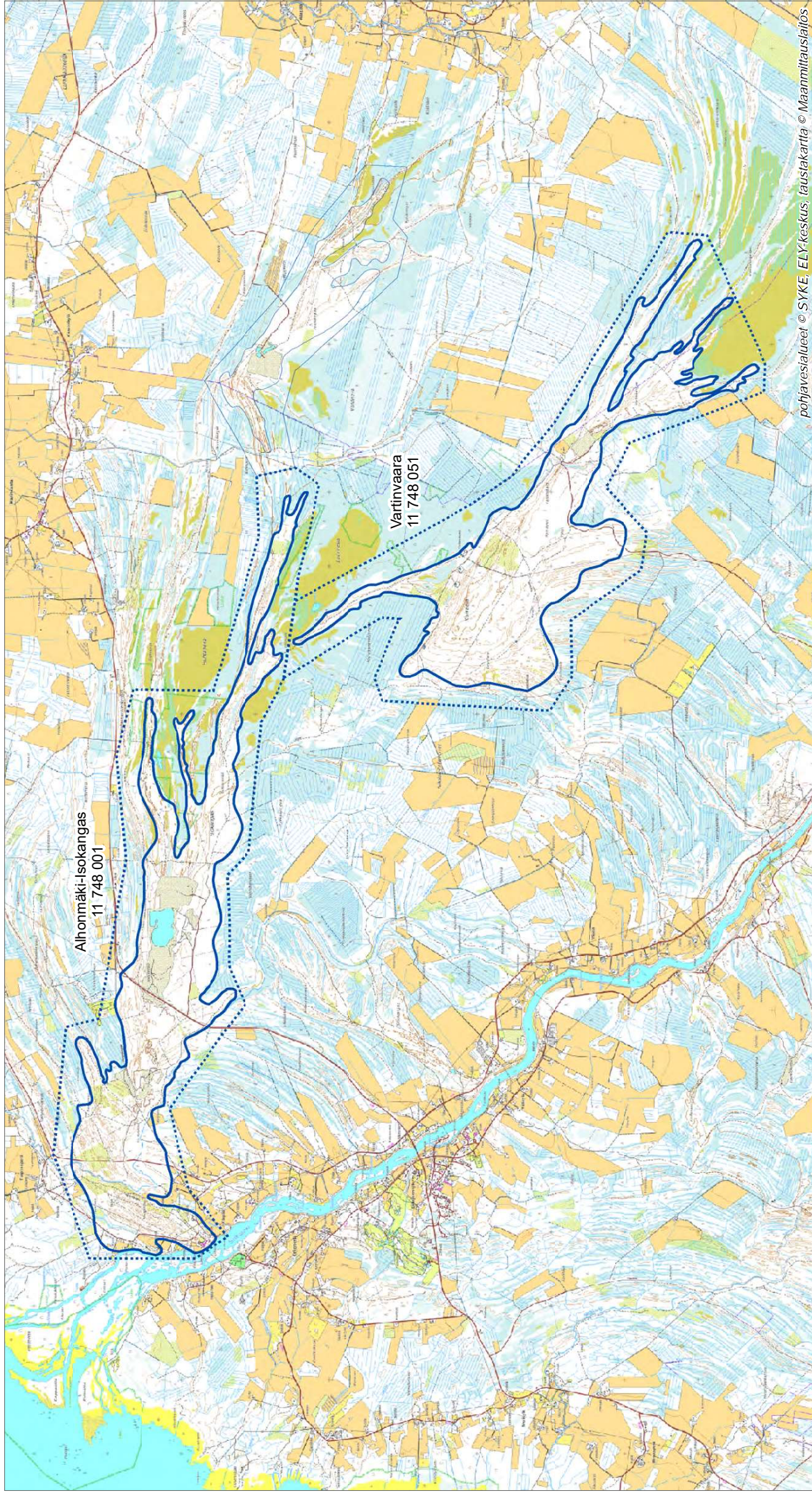
Turtakangas, 11 708 004, luokka 2
 Koivulankangas-Keltalankangas, 11 708 051, luokka 1
 Siikajoki




-  Pohjavesialueen raja
-  Varsinaisen muodostumisalueen raja

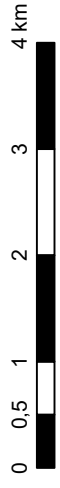
2.2.2018 1:50 000





Alhommäki-Isokangas, 11 748 001, luokka 2
 Vartinvaara, 11 748 051, luokka 1
 Siikajoki

-  Pohjavesialueen raja
-  Varsinaisen muodostumisalueen raja



1:50 000

pohjavesialueet © SYKE, ELY-keskus, taustakartta © Maanmittauslaitos

